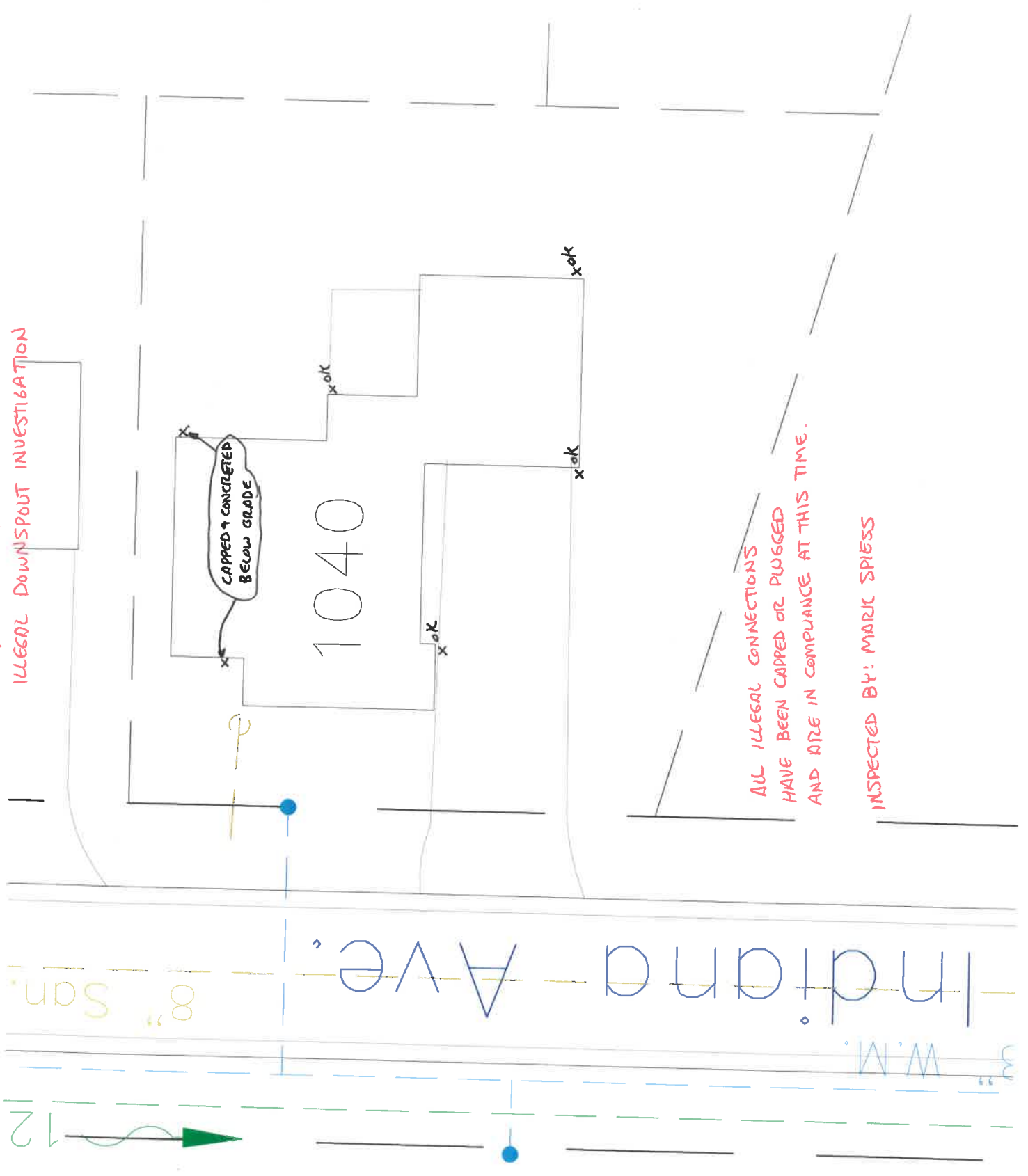


1040 INDIANA AVENUE  
ILLEGAL DOWNSPOUT INVESTIGATION



2016  
N  
1" = 20'

ALL ILLEGAL CONNECTIONS  
HAVE BEEN CAPPED OR PLUGGED  
AND ARE IN COMPLIANCE AT THIS TIME.

INSPECTED BY: MARK SPIESS

